



**Enforcer**Systems

01

## **Dedicated Motion Device**

Fast detection performance in all environments

02

## **Compressed Particle Module System**

Complete loss of visibility in the protected area

03

## **PCB**

Allows for flexible integration to any alarm system

04

## **Housing**

Compact, Strong and Lightweight design

# Enforcer Systems CPM

[www.enforcersystems.com.au](http://www.enforcersystems.com.au)



---

## Enforcer Systems CPM Range

The Enforcer Systems CPM range are essential components of any alarm system. The CPM units are a hard-wired, powerful and an effective method of properly protecting your assets.

Once the unit triggers, the Enforcer Systems CPM will obscure vision, repel intruders and protect your valuable assets with its dense emission.

**The Compressed Particle Module range consists of flexible area coverage for scalable solutions:**

## Master Control Units

---

E100CPM/MCU covers 100m<sup>3</sup>  
E200CPM/MCU covers 200m<sup>3</sup>, or allows for 2 activations of 100m<sup>3</sup>  
E300CPM/MCU covers 300m<sup>3</sup>, or allows for 3 activations of 100m<sup>3</sup>  
E400CPM/MCU covers 400m<sup>3</sup>, or allows for 4 activations of 100m<sup>3</sup>, or 2 activations of 200m<sup>3</sup>

## Sub Units

---

E100CPM/SU covers 100m<sup>3</sup>  
E200CPM/SU covers 200m<sup>3</sup>  
E300CPM/SU covers 300m<sup>3</sup>  
E400CPM/SU covers 400m<sup>3</sup>

## Filler Units

---

E100CPM/FU covers 100m<sup>3</sup>  
E200CPM/FU covers 200m<sup>3</sup>  
E300CPM/FU covers 300m<sup>3</sup>  
E400CPM/FU covers 400m<sup>3</sup>



# Dedicated Motion Device

**The Enforcer Systems CPM  
range contains a 360  
degree Motion Sensor  
within the unit.**

The motion detector has a unique and durable spherical lens that can provide 360 degree detection from the installation point. It has a temperature compensation and anti-photometric detection circuit.



#### PRODUCT FEATURES:

- *Quad Linear imaging technology for Sharp visuals*
- *Bi-directional temperature compensation*
- *10m Detection Range*
- *Variable pulse width adjustment*
- *PIR sensitivity adjustment*
- *Environmental Immunity*

## SPECIFICATION

- **Working Voltage:** 12V
- **Working Current:** 8mA – 25mA
- **Detection Distance:** 10m
- **Detection Angle:** 360 degrees
- **Installation:** 1.8m – 3.6m height
- **Working Temperature:** -10°C – 50°C
- **Dimension:** 86 x 86 x 25mm
- **Sensor:** Dual noise-free pyroelectric infrared transducer

01



# Compressed Particle Module System

**The Enforcer Systems CPM range utilize a new technology, Compressed Particle Module which burns at a high rate to ensure loss of visibility in the protected area.**

This technology consists of compressed food grade powders within a compact metal Cartridge. When triggered, the content powder will burn in a very efficient manner.





#### **BENEFITS:**

- *Eliminates visibility in the protected area*
- *Incredibly fast deployment and will spread to a wide area*
- *Unbearable to remain in the affected area*
- *Low-cost replacement cartridges*

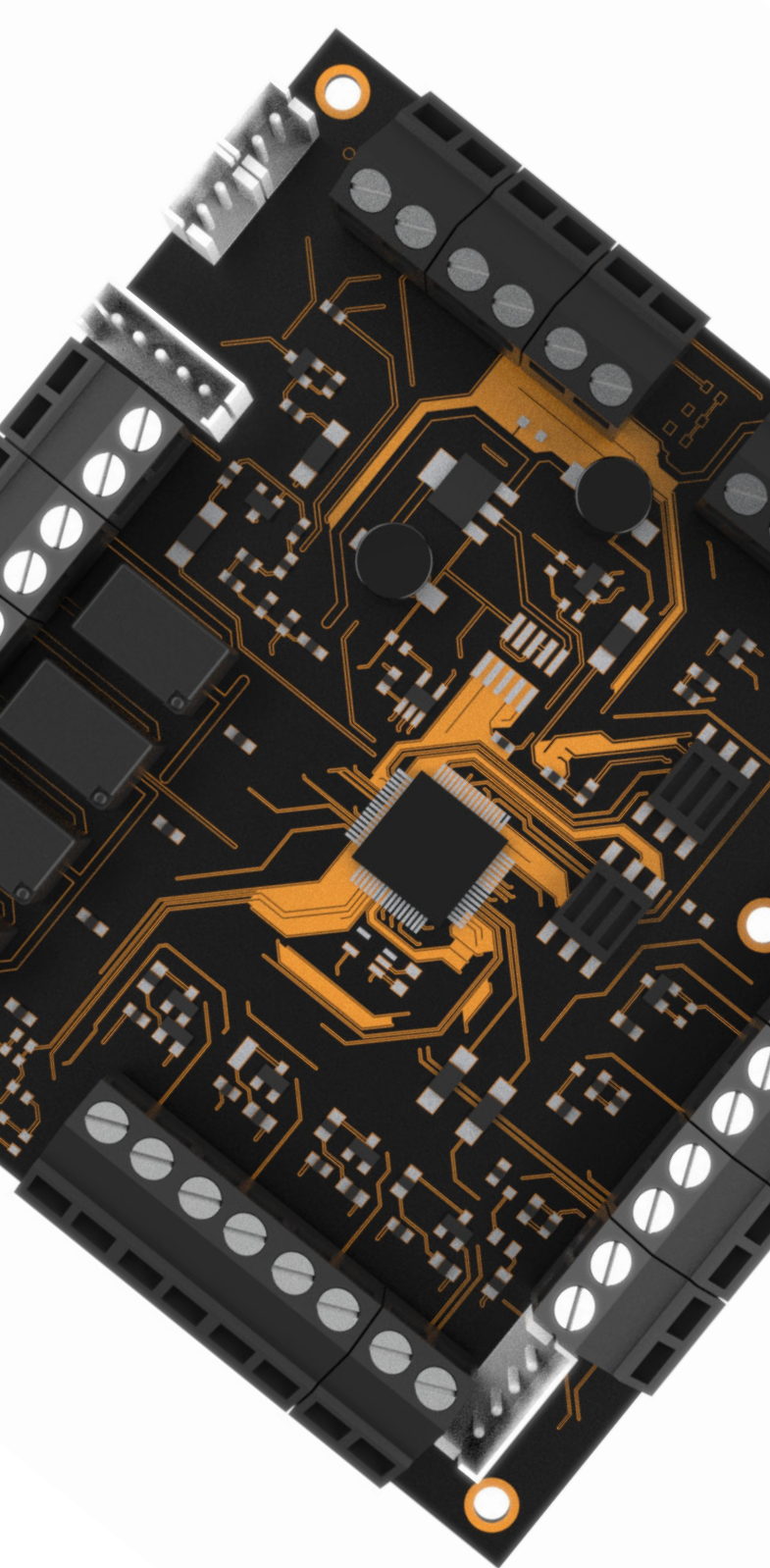
## **CPM SYSTEM**

**The CPM cartridge burns within 6 seconds and can produce an unpleasant smell to force intruders out of the affected area.**

Once the 360 degrees motion detector detects an intruder, the unit will disperse one or multiple cartridges (Model Dependent).

02

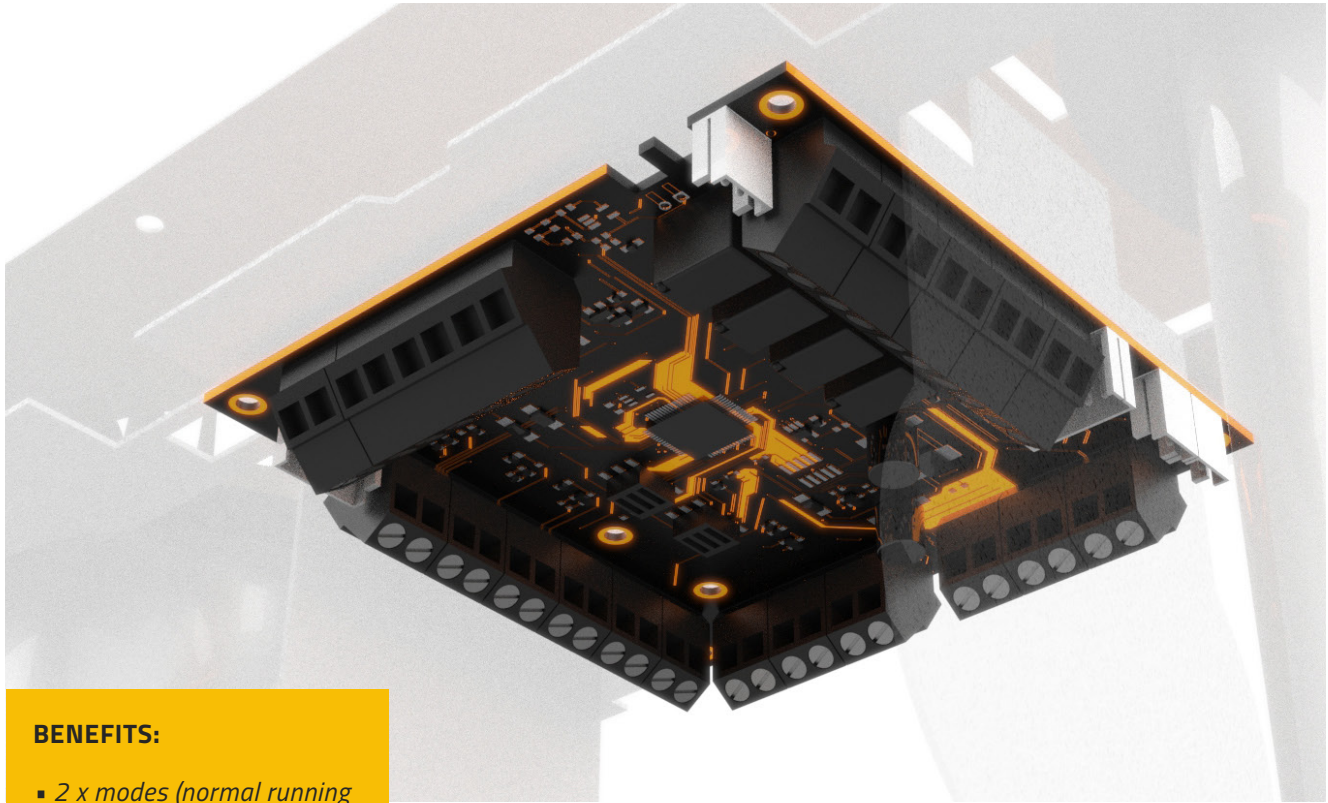




# PCB

## MICROCONTROLLER UNIT

- High performance Arm®, Cortex® - M0+ 32-bit RISC core Operating at up to 64 MHz Frequency. This is a high level integration MCU that incorporates a memory protection unit (MPU), high speed embedded memories for flash and SRAM.
  - Low power consumption device
- Communication interface on board
  - 7 Channel DMA controller with mapping
  - 12-bit, ADC (up to 16 external channels)
    - Up to 59 fast I/Os
    - Clock management
      - 2 watchdogs
      - Temp sensor



#### **BENEFITS:**

- 2 x modes (normal running and service)
- 6 x custom dip switch settings for scalable solutions
- 4 x high current main outputs (Max Peak: 5A each)
- 3 x high current sub outputs (Max Peak: 5A each)

## PCB

#### **MASTER CONTROL UNIT PCB**

- Multiple flexible inputs (primary-trigger, Arm, Sec-trigger1, Sec-trigger2)
- Supervision on-board (Tamper, Service, Trouble)
- Visual & Audible output (Strobe/Siren)
- Dedicated systems outputs on-board (System On, System Activation, System Armed, Service), Service reset switch (Built-in)
- Duress/Panic (Double poll terminals), 24 Hour
- International Standards/Approvals (RoHS, ʘU, CE, ISO 9000)

03



# Housing

## **E100CPM/MCU**

H 385mm / W 166mm  
D 153mm / Weight 3.20kg

## **E200CPM/MCU**

H 385mm, W 166mm  
D 153mm, Weight 3.95kg

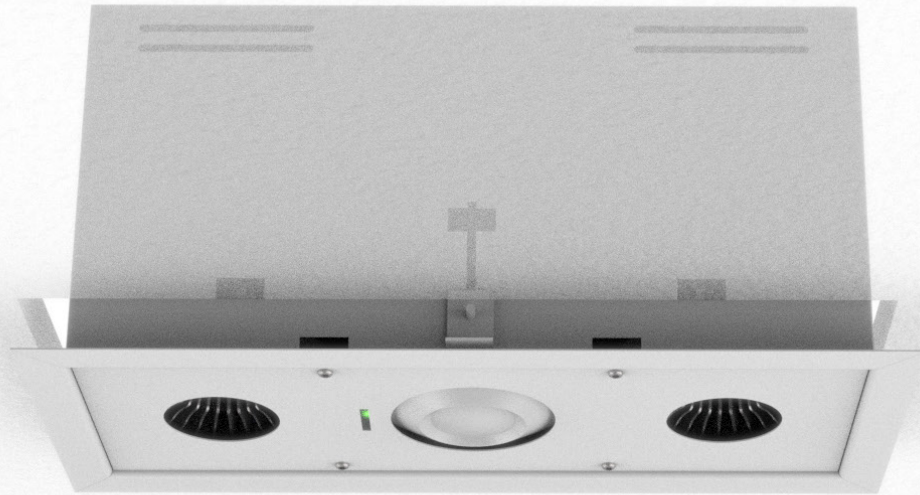
## **E300CPM/MCU**

H 325mm, W 325mm  
D 153mm, Weight 5.20kg

## **E400CPM/MCU**

H 325mm, W 325mm  
D 153mm, Weight 5.95kg





#### **SPECIFICATIONS:**

- *Compact by design*
- *Strong Metal Housing*
- *Modular designed for fast installation*
- *Powder Coated for durability*
- *Lightweight design*
- *Multiple mounting solutions*
- *Off-white in colour*

## **HOUSING**

**E100CPM/SU:** H 385mm, W 166mm, D 153mm, Weight 3.05kg

**E200CPM/SU:** H 385mm, W 166mm, D 153mm, Weight 3.80kg

**E300CPM/SU:** H 325mm, W 325mm, D 153mm, Weight 5.05kg

**E400CPM/SU:** H 325mm, W 325mm, D 153mm, Weight 5.80kg

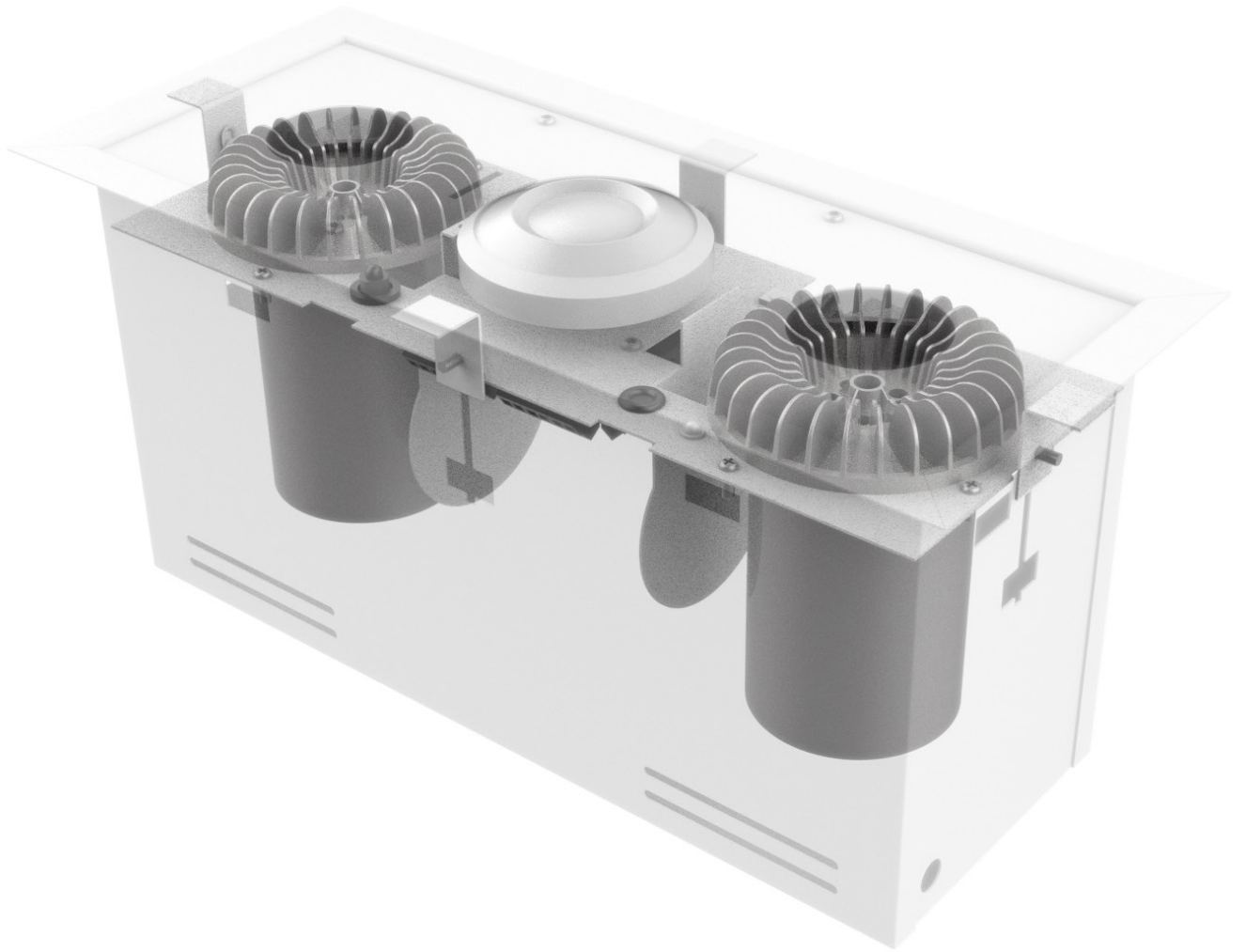
**E100CPM/FU:** H 385mm, W 166mm, D 153mm, Weight 2.95kg

**E200CPM/FU:** H 385mm, W 166mm, D 153mm, Weight 3.70kg

**E300CPM/FU:** H 325mm, W 325mm, D 153mm, Weight 4.95kg

**E400CPM/FU:** H 325mm, W 325mm, D 153mm, Weight 5.70kg

04









# Hard Wired Solution to any Alarm System for complete Asset Protection

[www.enforcersystems.com.au](http://www.enforcersystems.com.au)  
[sales@enforcersystems.com.au](mailto:sales@enforcersystems.com.au)  
1300 310 000

